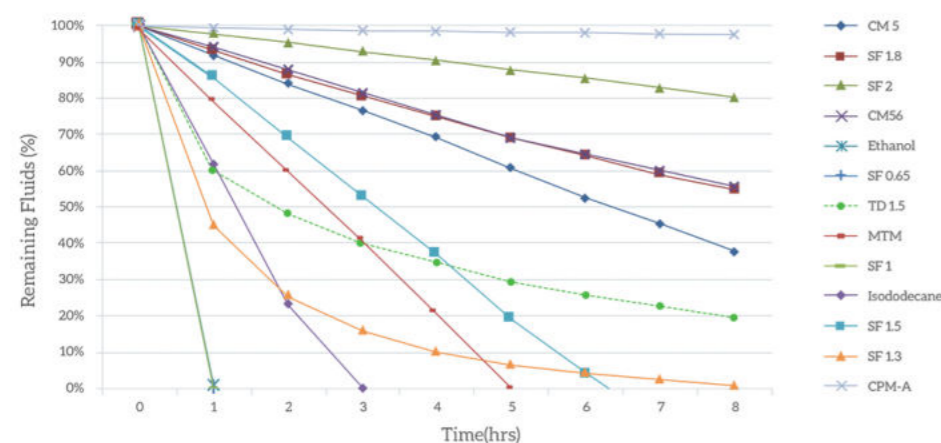


Volatile Silicone Fluids

Product Name	INCI Name	Benefits	Characteristics	Appearance	Viscosity (cS at 25°C)	Flash Point (°C)	Surface Tension (mN/m)	Specific Gravity (at 25°C)
SeraSense SF 0.65	Disiloxane	<ul style="list-style-type: none"> <li>Excellent spread quality</li> <li>Very fast vaporisation</li> <li>Non-VOC cosmetic solvent</li> </ul>	The shortest chained dimethicone polymer available for fast evaporation with a non-cooling effect. A good cosmetic solvent	Clear, Colourless Fluid	0.65	-3.3	15.9	0.76
SeraSense SF 1	Trisiloxane	<ul style="list-style-type: none"> <li>Non-VOC cosmetic solvent</li> </ul>	Recommended usage level 1.0-90.0		1	30	16.9	0.818
SeraSense SF 1.5	Dimethicone	<ul style="list-style-type: none"> <li>Soft and silky skin feel</li> <li>Excellent spread quality</li> <li>Non-VOC cosmetic solvent</li> <li>Non-flammable</li> <li>Non skin cooling vaporisation</li> </ul>	Short straight chained dimethicones that have close evaporation profiles to that of D5 with all the versatility and benefits that D5 offer but from a different silicone technology.		1.5	63	17.7	0.852
SeraSense SF 2		<ul style="list-style-type: none"> <li>Non-flammable</li> <li>Non skin cooling vaporisation</li> </ul>	Recommended usage level 1.0-90.0		2	80	18.3	0.873
SeraSense SF 1.8		<ul style="list-style-type: none"> <li>Excellent spreading</li> <li>No oily residue</li> <li>Dry non-greasy feel</li> <li>Improves wet combing</li> <li>Compatible with many organic materials, solvents</li> <li>Low surface tension and viscosity</li> </ul>	<ul style="list-style-type: none"> <li>Volatile methylsiloxane fluid and has a linear structure with transient emollients or carriers with excellent spread ability and lubrication properties.</li> <li>When volatile silicone fluids evaporate, they do not leave a residue or cool the skin. By using blends of dimethicones this difference in volatility can be used to vary the residence time of the silicone on the skin.</li> </ul>		1.8	73	18.1	0.865
SeraSense TD 1.5		Dimethicone (and) Trisiloxane	<ul style="list-style-type: none"> <li>Non skin-cooling vaporization</li> <li>Excellent spread quality</li> <li>Soft and silky skin feel</li> <li>Non-VOC cosmetics solvent</li> <li>Low D4/D5 content</li> </ul>		It is a volatile methylsiloxane fluid and has a linear structure with transient emollients or carriers with excellent spread ability and lubrication properties.	1.5	-	-
SeraSense TD 1.6	<ul style="list-style-type: none"> <li>Low D4/D5 content</li> </ul>		When volatile silicone fluids evaporate, they do not leave a residue or cool the skin. By using blends of dimethicones this difference in volatility can be used to vary the residence time of the silicone on the skin.		1.6	42	-	0.85
SeraSense SF CM5	Cyclopentasiloxane	<ul style="list-style-type: none"> <li>Soft and silky skin feel</li> <li>Excellent spread quality</li> <li>Non-VOC cosmetic solvent</li> <li>Non-flammable</li> <li>Non skin cooling vaporisation</li> </ul>	Cyclic volatile silicone fluids for use in a wide variety of skin, hair and colour personal care applications. Excellent skin feel with a transient emolliency and are deemed to be the most important cosmetic solvents in use today.		4	77	18	0.956
SeraSense SF CM56	Cyclopentasiloxane (and) Cyclohexasiloxane	<ul style="list-style-type: none"> <li>Non-flammable</li> <li>Non skin cooling vaporisation</li> </ul>	Recommended usage level 0.5-90.0				5	20.8
SeraSense SF CPM-A	Caprylyl Methicone	<ul style="list-style-type: none"> <li>Replace D5 (Less dry than more volatile materials)</li> <li>Excellent compatibility with a wide range of ingredients</li> <li>Improved pigment dispersibility</li> <li>Easy to formulate</li> <li>Superior cleansing effect</li> <li>Can be heated up to 90 °C</li> <li>Possible to make transparent formulations</li> </ul>	An alkyl modified siloxane for use in various skin, colour and lip care formulations to improve smoothness, detakification and emolliency. This polymer is also very compatible with organic ingredients meaning that formulations containing natural materials can be created that still feel light and silky.		3	110	20.4	0.84
SeraSense SF MTM	Methyltrimethicone	<ul style="list-style-type: none"> <li>Replace D5 (better volatile &amp; has lower freezing point)</li> <li>Unique sensory feel</li> <li>Excellent compatibility</li> <li>No irritation</li> <li>Odorless, ultra high purity</li> </ul>	This branched type volatile silicone fluid has faster volatility and lower freezing point than D5. This unique sensory feel product provides improved skin wetting and a quick flash-off that leaves a dry, silky feel on skin with no buildup. And it has excellent emolliency and aesthetic carriers with superior spreading, lubrication and transient conditioning.	1.5	64	-	0.85	



\* SF 0.65 = SF 1 = Ethanol > Isododecane > SF 1.3 > MTM > SF 1.5 > TD 1.5 > CM 5 > SF 1.8 = CM 56 > SF 2 > CPM-A

